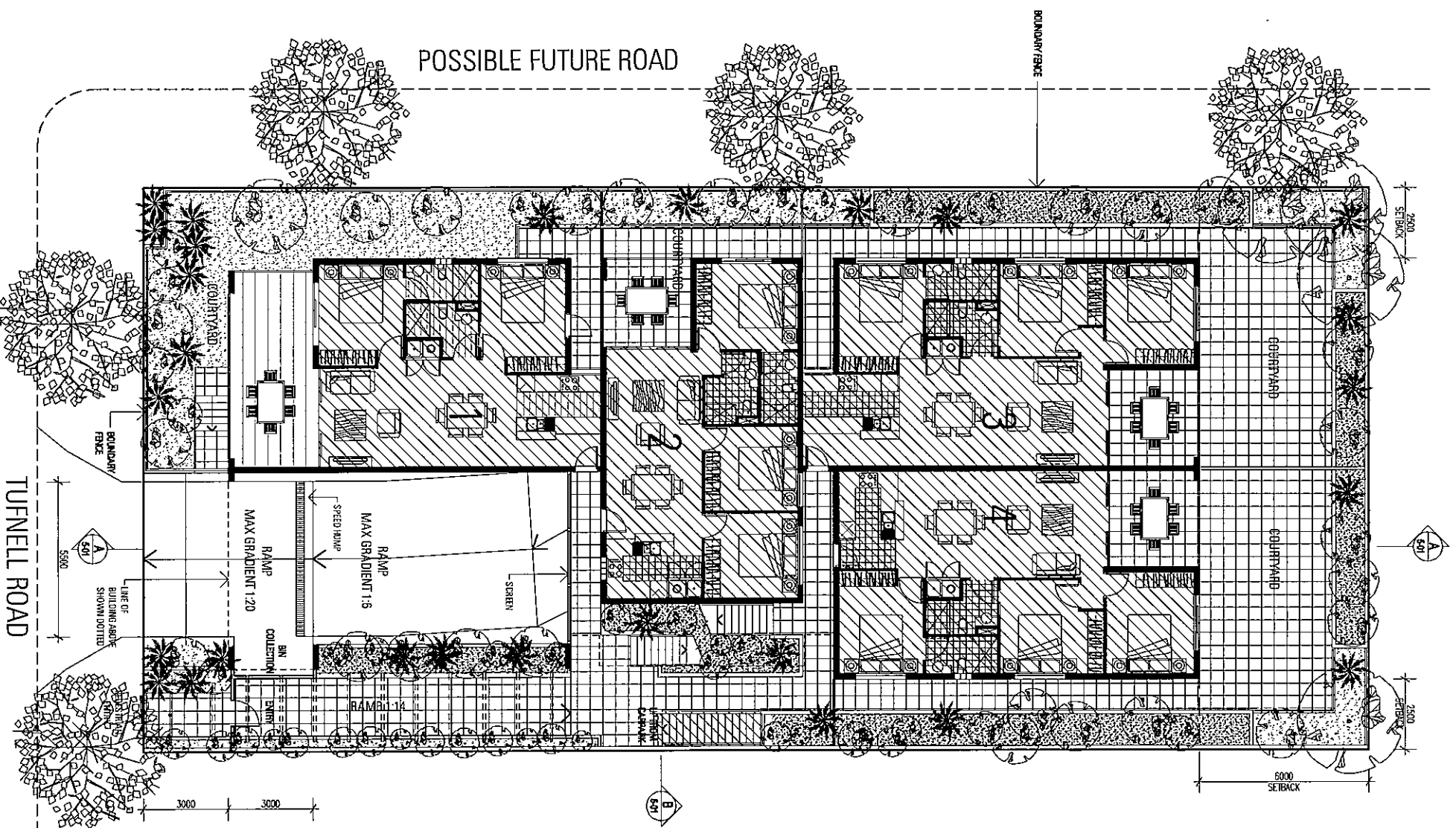
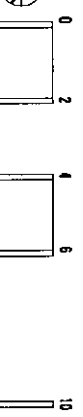


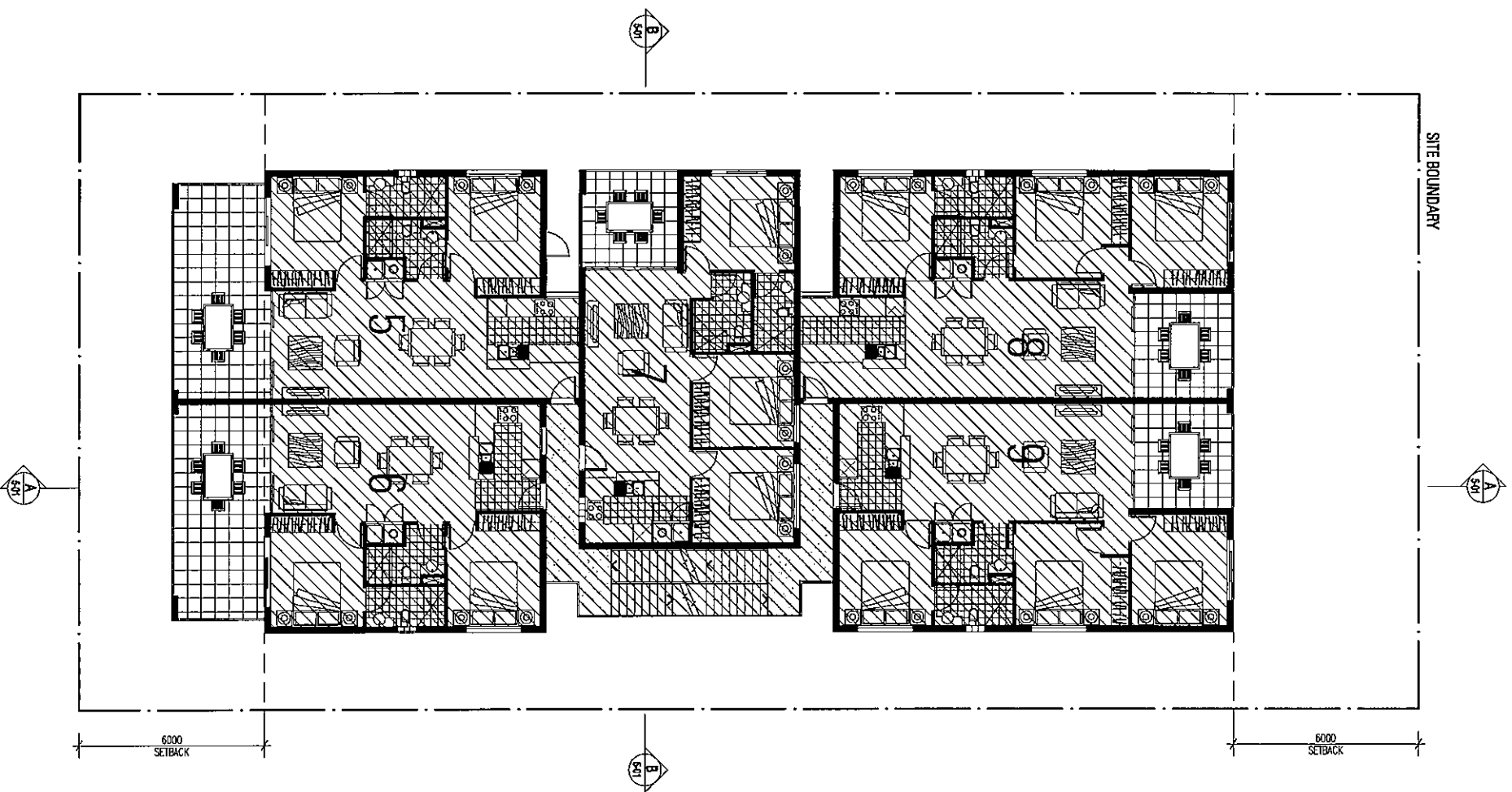
Site Area (m²) 870.0
 Permissible Plot Ratio 1.25
 Permissible GFA (m²) 1087.5
 Actual Plot Ratio 1.20
 Actual GFA (m²) 1046



LEVEL	Unit Number	Apartment GFA (m ²)	Circulation (m ²)	Balcony/Courtyard (m ²)
GROUND FLOOR	Unit 1	68.2	-	86.0
	Unit 2	72.1	-	27.0
	Unit 3	84.9	-	107.0
	Unit 4	79.7	-	100.0
	Subtotal	304.9	4.3	320.0
FIRST FLOOR	Unit 5	69.0	-	21.1
	Unit 6	63.9	-	21.1
	Unit 7	72.1	-	9.9
	Unit 8	84.9	-	11.9
	Unit 9	79.7	-	11.9
Subtotal	389.6	27.9	75.9	
SECOND FLOOR	Unit 10	76.3	-	60.0
	Unit 11	72.2	-	9.9
	Unit 12	85.0	-	11.9
	Unit 13	79.7	-	11.9
	Subtotal	313.2	26.5	93.7
Subtotal GFA		340		93.7
Total (m ²)		987.7	58.7	489.6
Total GFA (m ²)		1046		

GFA GROUND FLOOR TOTAL = 309m²



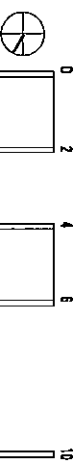


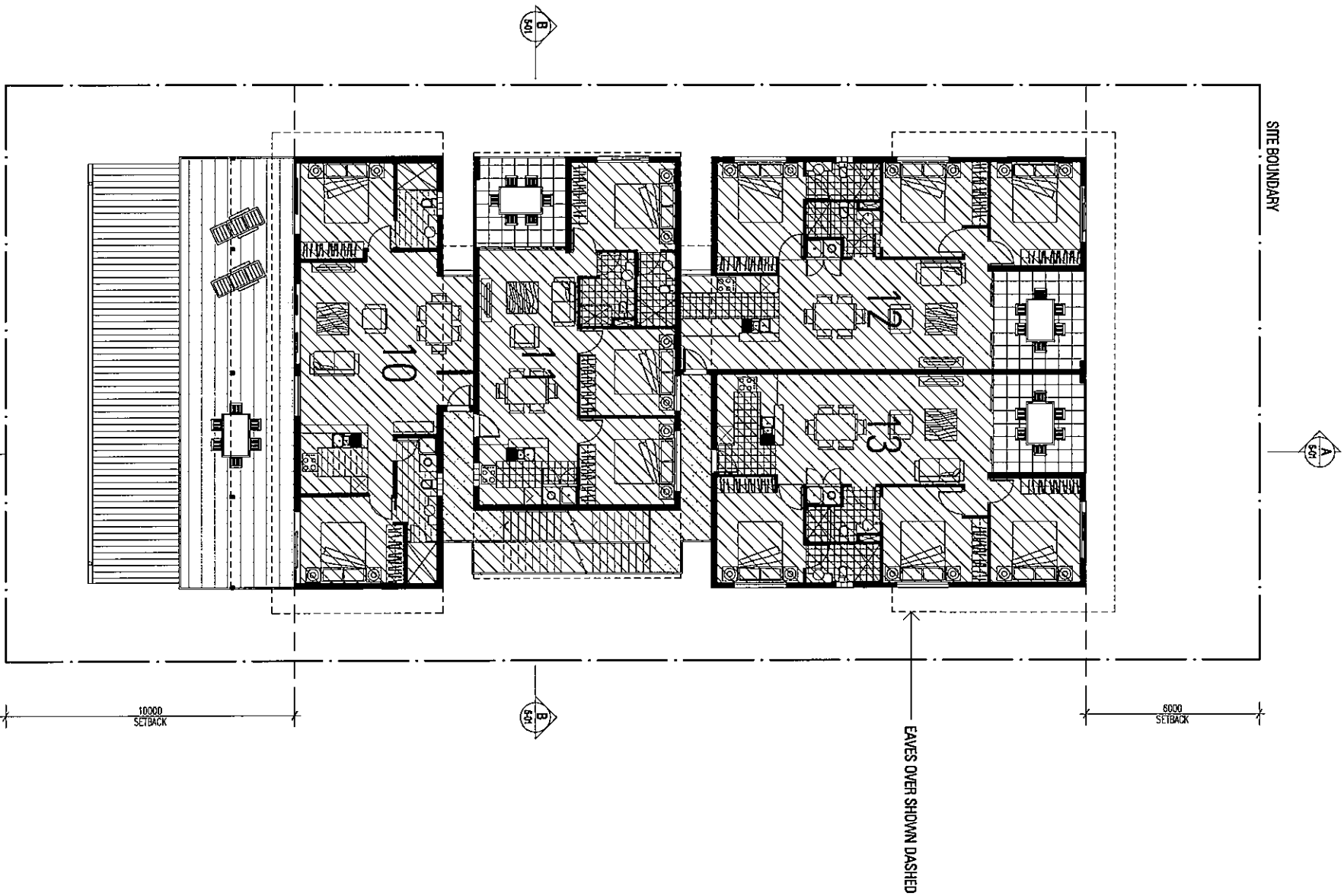
GFA FIRST FLOOR TOTAL = 398m²

80031005
03/11/12

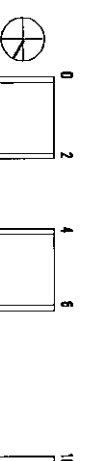
P3

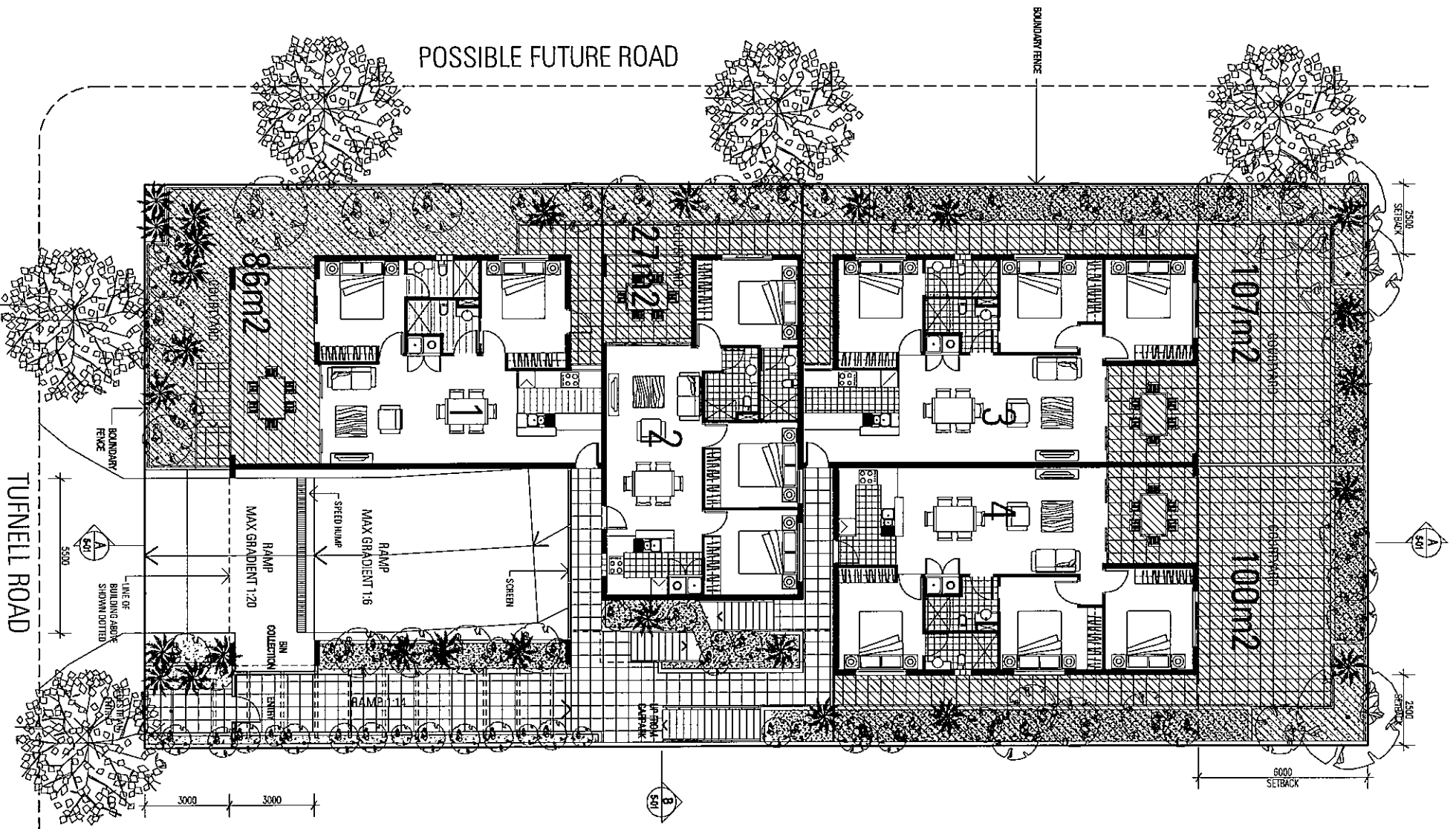
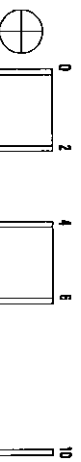
12TH JULY 2006
1/2006/14

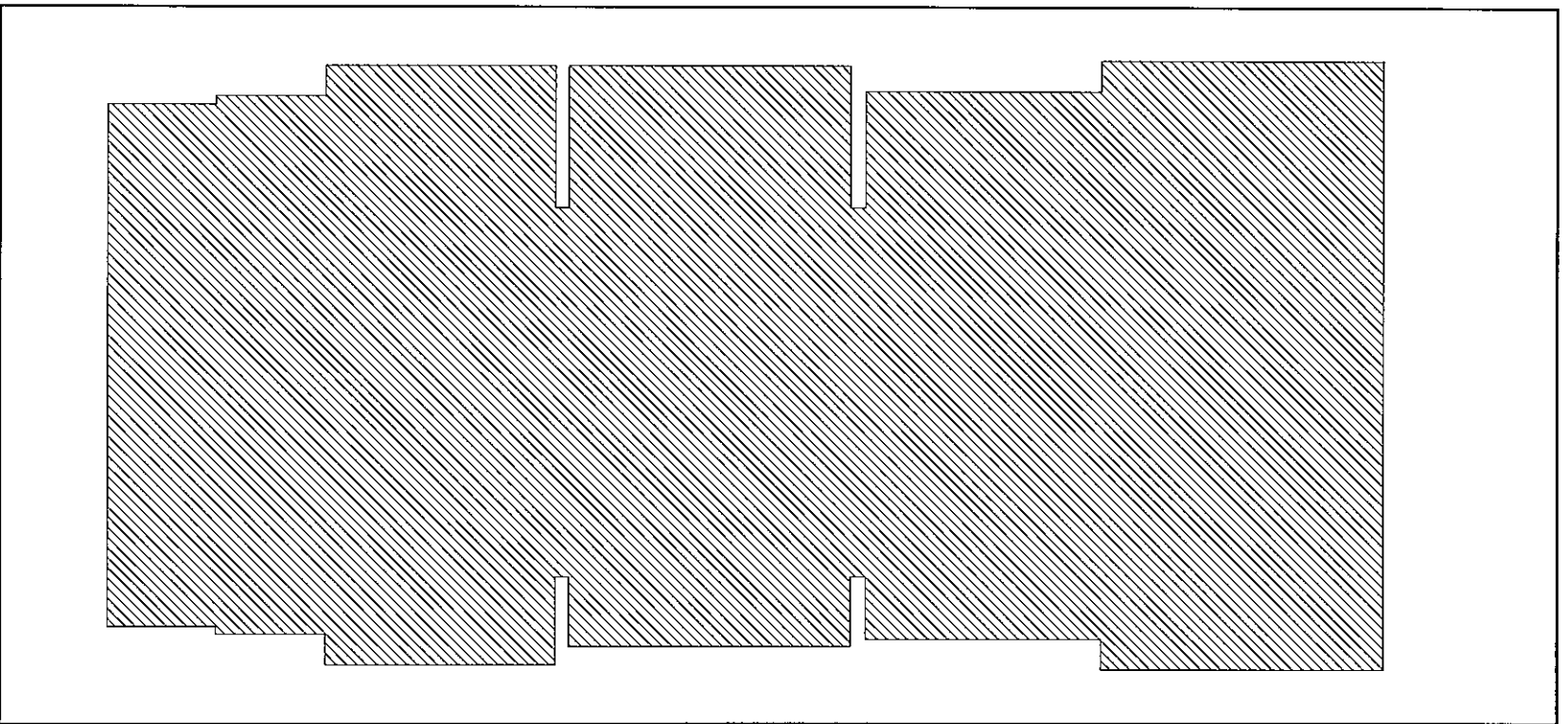




GFA SECOND FLOOR TOTAL = 340m²





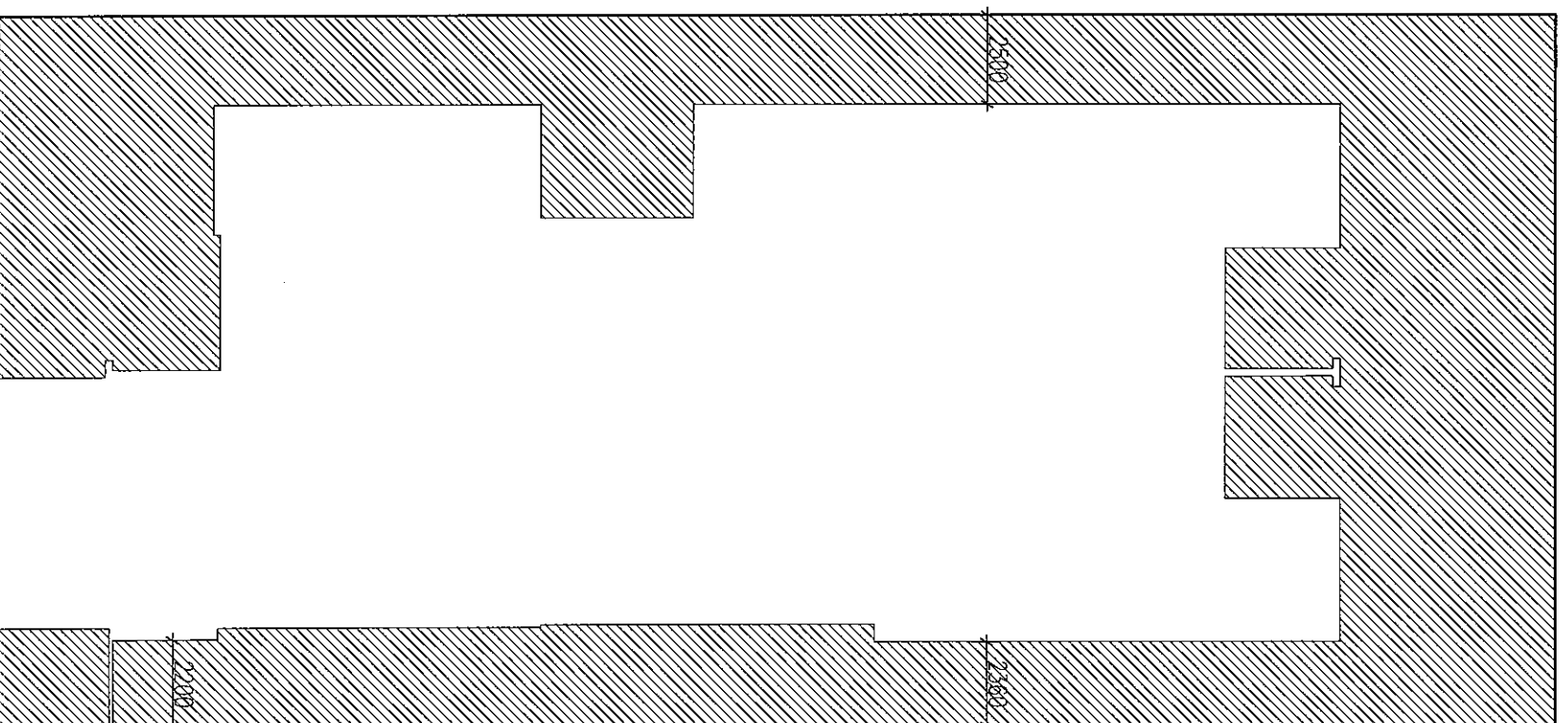


site cover

site area = 870m²

site cover = 568m²

site cover = 65.3%

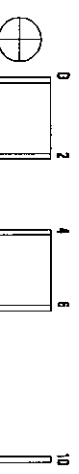


open space

site area = 870m²

open space = 394m²

open space = 45.2%



DESIGNINC BRISBANE
89.031.B05 Tufnell Road, Banyo Stage 2

11th July 2006

Site Area (m2) 870.0
 Permissable Plot Ratio 1.25
 Permissable GFA (m2) 1087.5
 Actual Plot Ratio 1.20
 Actual GFA (m2) 1046

LEVEL	Unit Number	Apartment GFA	Circulation	Balcony/Courtyard
		(m2)	(m2)	(m2)
GROUND FLOOR	Unit 1	68.2	-	86.0
	Unit 2	72.1	-	27.0
	Unit 3	84.9	-	107.0
	Unit 4	79.7	-	100.0
	Subtotal	304.9	4.3	320.0
FIRST FLOOR	Subtotal GFA	369.6	27.9	75.9
	Unit 5	69.0	-	21.1
	Unit 6	63.9	-	21.1
	Unit 7	72.1	-	9.9
	Unit 8	84.9	-	11.9
Unit 9	79.7	-	11.9	
Subtotal	369.6	27.9	75.9	
SECOND FLOOR	Subtotal GFA	398		
	Unit 10	76.3	-	60.0
	Unit 11	72.2	-	9.9
	Unit 12	85.0	-	11.9
	Unit 13	79.7	-	11.9
Subtotal	313.2	26.5	93.7	
Subtotal GFA	340			
Total (m2)	987.7	58.7	489.6	
Total GFA (m2)	1046			